



16 Stafford Road, Newport, TF10 7LX
£300 Per Week

This property is suitable for three students is just a short walk from the town centre. It offers groups a spacious kitchen diner, cosy lounge, three well portioned bedrooms and a modern shower room. Its a lot bigger than it looks so viewing is essential.

Lounge



Bedroom Three



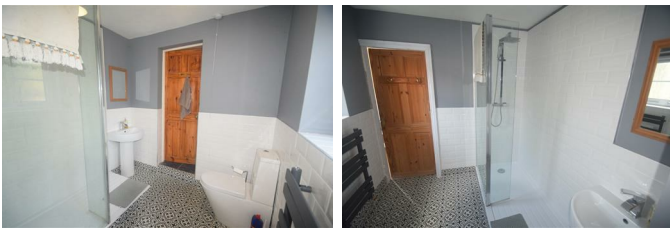
Kitchen Diner



Outside

There is a small parking area to the front of the property with shared driveway parking. Occupiers would need to be sensitive to the neighbours needs on the shared parking area. There is a garden to the rear of the house down a short pathway.

Shower Room



Bedroom One (Ground Floor)

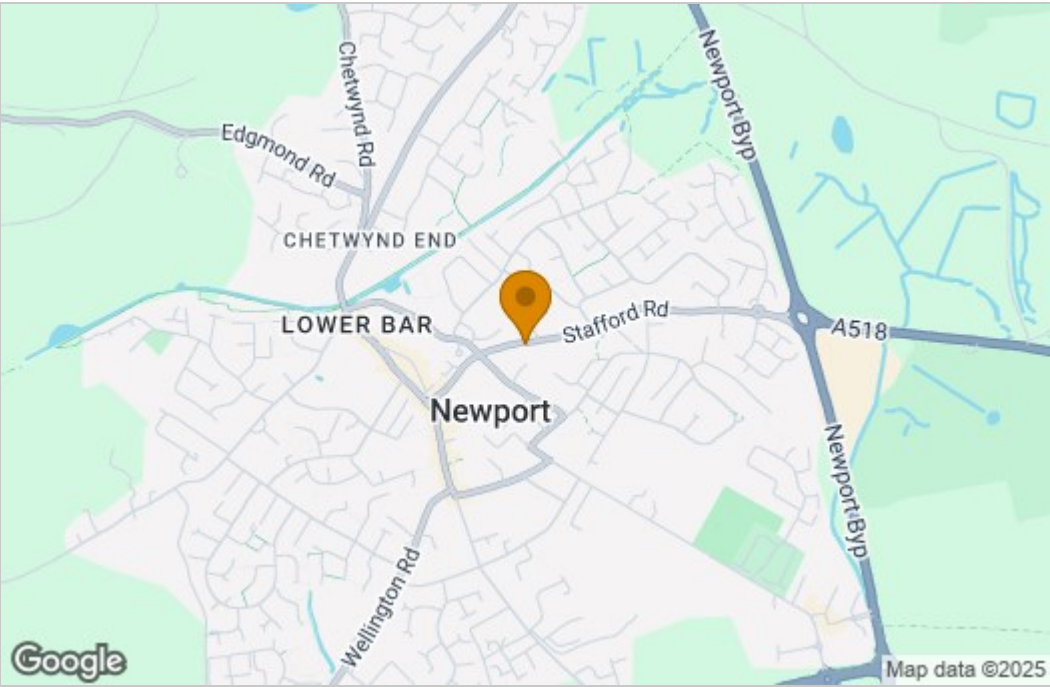


Bedroom Two

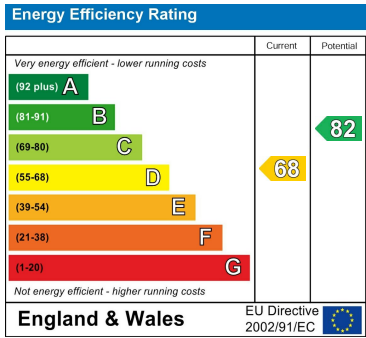


Floor Plan

Area Map



Energy Efficiency Graph



These particulars, whilst believed to be accurate are set out as a general outline only for guidance and do not constitute any part of an offer or contract. Intending purchasers should not rely on them as statements of representation of fact, but must satisfy themselves by inspection or otherwise as to their accuracy. No person in this firms employment has the authority to make or give any representation or warranty in respect of the property.